

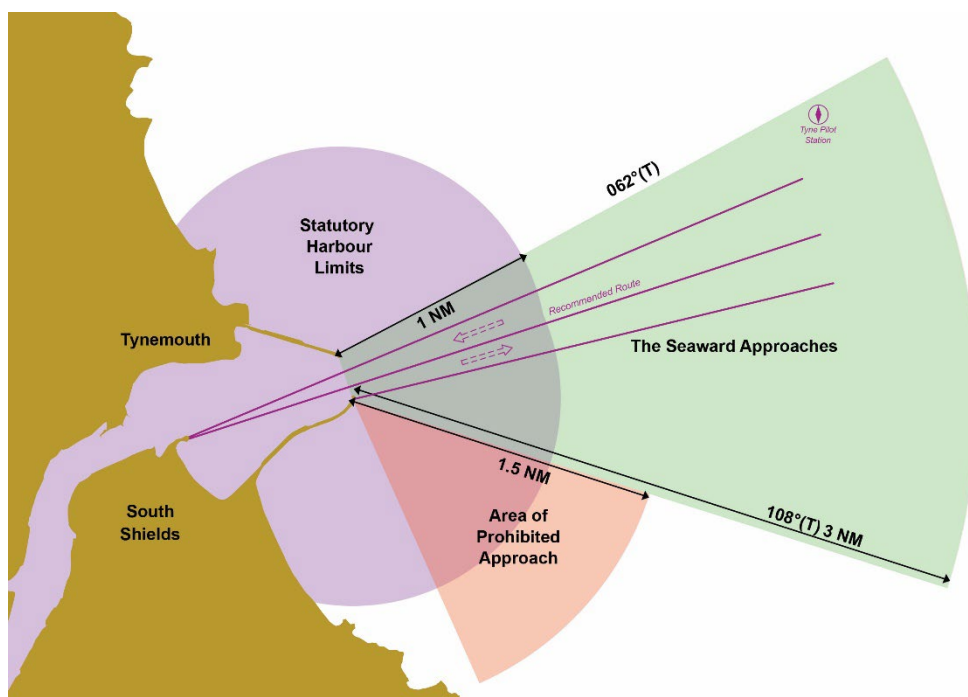
Notice to Mariners

No 9 of 2024

Seaward Approaches to the River Tyne

Mariners are advised that all vessels approaching the Port with the intent to enter from the south or east should:

- **Keep within the seaward approaches when proceeding towards the entrance.**
- **Avoid setting a course that crosses outbound traffic for a distance from the piers of 1.5 nautical miles.**



Mariners should navigate with extreme caution within this area. All vessels should monitor “Tyne VTS” on VHF Channel 12 and may request an update on current shipping movements.

Alan Feast
Harbour Master

1st Jan 2024